

WILD PLANET

WHITE UNIT

PART 15

AM BROADCAST TRANSMITTER

FCC ID: N3ERDJSTUDIO92004

BUILT BY



Wild Planet Toys, Inc

98 Battery Street
Suite 300
San Francisco, CA 94111

Tel	415-705-8300
Fax	415-705-8311
E-mail	www.wildplanet.com

COMPILED BY JEFF MORRISON APRIL 17, 2015

TABLE OF CONTENT

PAGE

- 1) INSTRUCTION MANUAL**
- 2) INSTRUCTION MANUAL**
- 3) VIEW, FRONT & TOP**
- 4) VIEW, BOTTOM & FCC LABEL**
- 5) VIEW, INSIDE**
- 6) VIEW, TOP PCB**
- 7) VIEW, VOLUME CONTROL PCB**
- 8) VIEW, CASSETTE DRIVE**
- 9) VIEW, BACK ON AIR LIGHT PCB**
- 10) VIEW, INSIDE CONTROL SECTION**
- 11) VIEW, FCC TEST SETUP FRONT & BACK**
- 12) FCC, GRANT OF EQUIPMENT AUTHORIZATION CERTIFICATION**



RADIO DJ

Real DJ Broadcast Studio

Ages 6 & up!
#92004

IMPORTANT: Keep these instructions. **DO NOT DISCARD.**

Use your Radio DJ to create a show so incredible you won't believe your ears! You can introduce and play your favorite tapes and CD's, report the news, or start your own talk show. The Radio DJ will send your voice and music through any radio in your room, house or car. It can transmit up to 30 feet so your friends can listen to you on the radio in another room. You can be a real DJ.

Radio DJ Features: (Figure 1)

- Separate volume controls for tape deck, and microphone / special effects
- Accessory Jack to plug in your CD player to broadcast your favorite CD's.
- Built-in tape deck to play your tapes on the air.
- Four pre-recorded sound effects (Laugh, Cheer, Drum, Buzzer)
- Fade-in microphone.
- Light-up "On Air" sign
- Built-in Antenna wire
- Ground wire
- Audio Patch Cord to connect your CD player or other accessory.

Specifications:

- Requires 4 x 1.5V "AA" (LR6) batteries (not included).
- Only adults should install and replace batteries.
- Alkaline batteries are recommended for longer life.
- Do not use rechargeable batteries.
- Non-rechargeable batteries are not to be recharged.
- Exhausted batteries should be removed from the toy.
- Do not mix old and new batteries.
- Do not mix alkaline, standard (carbon zinc) or rechargeable (nickel cadmium) batteries.
- Batteries should be inserted with the correct polarity.
- The supply terminals are not to be short-circuited.
- Only the batteries of the same or equivalent type as recommended are to be used.

Battery Installation and Replacement

The Radio DJ requires four 1.5 Volt "AA" (LR6) batteries (not included).

To install the batteries:

1. With a small Phillips screwdriver, loosen the battery door screw located on the underside of the toy. (Figure 2)
2. Remove the battery door.
3. Discard the old batteries.
4. Insert fresh batteries into the battery compartment. Note the polarity requirements (Figure 3)
5. Replace the battery door and tighten the screw.

"On Air" Broadcast Setup

To set up the Radio DJ:

1. Turn on the Radio DJ by rotating the volume knob clockwise until you hear a click. The "On Air" sign will illuminate to indicate power on.
2. Hang the yellow antenna wire in the open (preferably elevated) (Figure 4) for best reception on your "AM" radio. Do not bunch up the antenna (Figure 5) or lay it over metal objects. Suspending the antenna in the air with a piece of string can be helpful. The red "LED" signal indicator will glow brightly if the antenna is properly arranged. A flickering or dimly lit "LED" indicates a weak signal. Rearrange the antenna until the "LED" glows brightly. (Figure 4)
3. Clip the black ground wire to a metal object such as a table or chair. Use of the ground wire will enhance broadcast clarity and distance, but is not mandatory. Using the ground wire will also help to ensure the satisfactory performance of devices connected to the accessory jack.
4. Obtain and turn on an "AM" radio. Keep it close at hand. Tune the "AM" radio station selector to 1610 kHz. Now speak into the microphone of the Radio DJ and fine tune the "AM" radio until you can hear your voice clearly. You are now ready to broadcast "live". Place your "AM" radio in a convenient location.

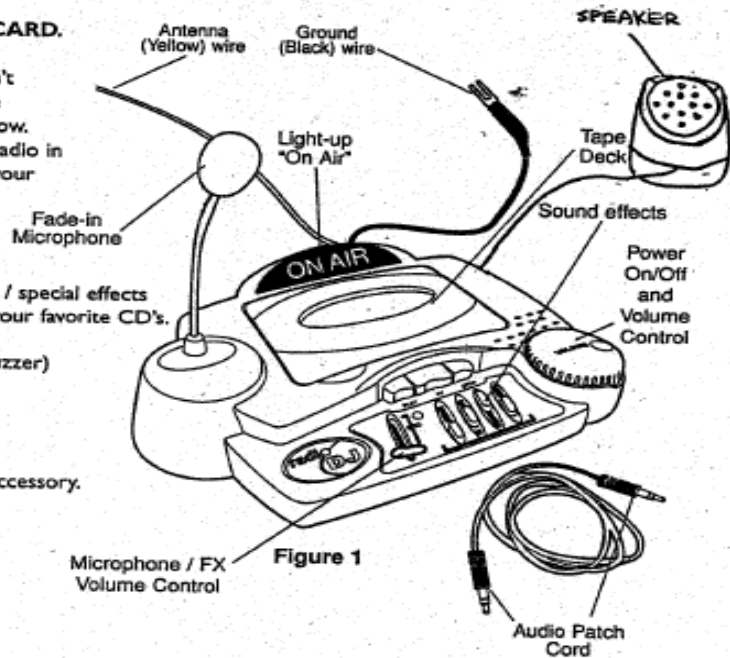


Figure 1
Microphone / FX Volume Control

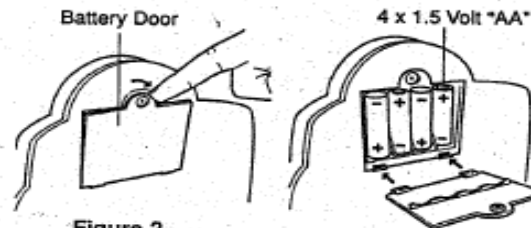


Figure 2

Figure 3

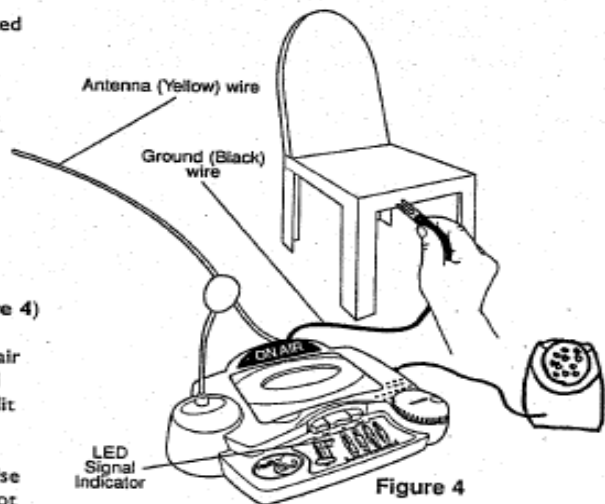


Figure 4



Broadcast Your Voice (Figure 6)

1. Speak into the microphone and hear your voice on the "AM" radio.
2. Set the microphone volume to the desired level by sliding the Microphone/FX button up or down, fading in or out.

Broadcast Music Using the Tape Deck (Figure 7)

The Radio DJ includes a built-in audio tape deck. To use:

1. Select a pre-recorded cassette tape. (60 minute length or shorter work best)
2. Lift the tape door with your fingers and insert tape as shown.
3. Close the tape door.
4. Press "Play". Hear the music on the "AM" radio.
5. Turn the volume control knob clockwise / counterclockwise to increase or lower the volume respectively.
6. Press the "FF" button to fast-forward the tape ahead, as desired.

Note: There is no Rewind button. To rewind a tape, press the "Stop" button and remove the tape from the deck. Flip the tape over, reinsert, and press "FF". This will rewind the tape on the opposite side. Press "Stop" when the tape reaches the end of the reel and remove the tape from the deck. Flip the tape over, reinsert, and press "Play".

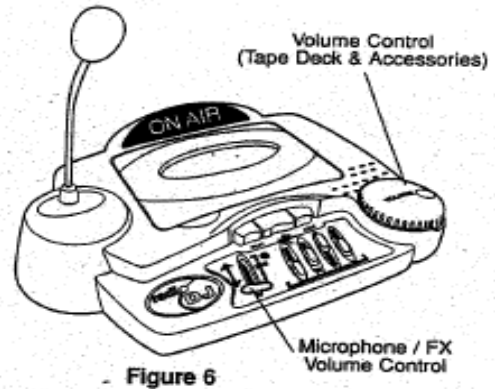


Figure 6

Broadcast Sound Effects (Figure 8)

There are four pre-recorded sound effects built into the Radio DJ for Broadcasting to your "AM" radio. To use:

1. Press and release the desired sound button. Hear it on the "AM" radio.
2. Set the sound effects volume to the desired level by sliding the Microphone/FX button up or down.
3. If desired, press a second sound button to over-ride the first one selected. Or, press the same over and over to create a special effect.
4. Press and release a sound button while the tape deck is playing, to hear both music and sound effects at the same time.

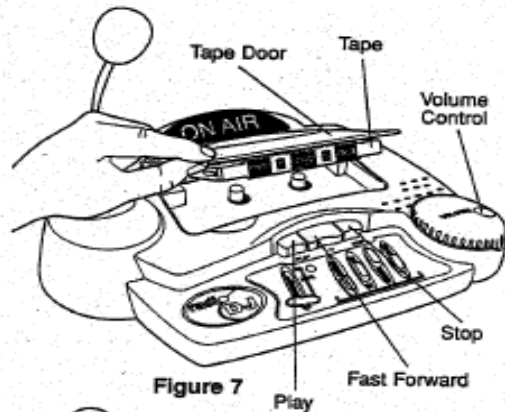


Figure 7

Broadcast Music Using the Accessory Jack (Figure 9)

The Radio DJ includes an accessory jack for connecting portable devices such as your CD player, an additional tape deck or a music keyboard. To use a portable CD player:

1. Plug one end of the audio patch cord (Figure 1) into the accessory jack of the Radio DJ.
2. Plug the other end into the headphone or output jack of your CD player.
3. Press the play button on the CD player.
4. Turn the Radio DJ volume knob clockwise / counterclockwise to increase or lower the volume respectively. The volume can be also controlled using the volume control on the CD player.
5. It is not recommended to play the CD player and the Radio DJ cassette deck at the same volume (at the same time). It will be hard to hear individual sounds. Fading in and out works best.

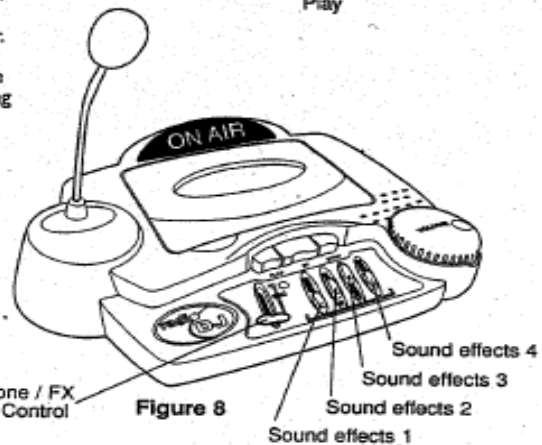


Figure 8

Warning: Changes or modifications to this toy that are not expressly approved by Wild Planet Toys, Inc. could void the user's authority to operate the toy.

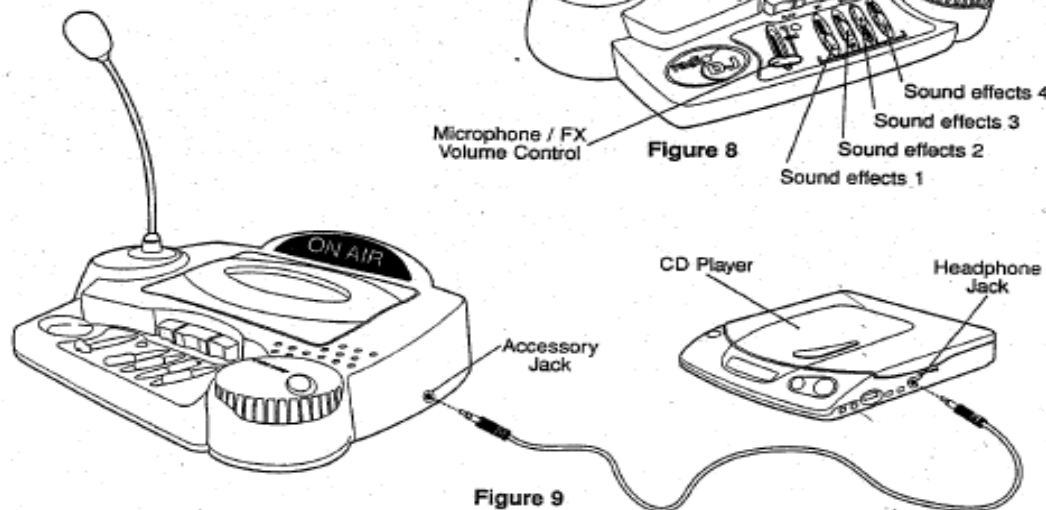


Figure 9

WARNING :
 CHOKING HAZARD: Small Parts
 Not for Children Under 3 Yrs.

VIEW, FRONT & TOP



VIEW, BOTTOM & FCC LABEL



Wild Planet Toys Incorporated
FCC ID: N3ERDJSTUDIO92004

This device complies with Part 15 of the FCC Rules. Operation is subject to the following two conditions: (1) This device may not cause harmful interference, and (2) this device must accept any interference received, including interference that may cause undesired operation.

VIEW, INSIDE

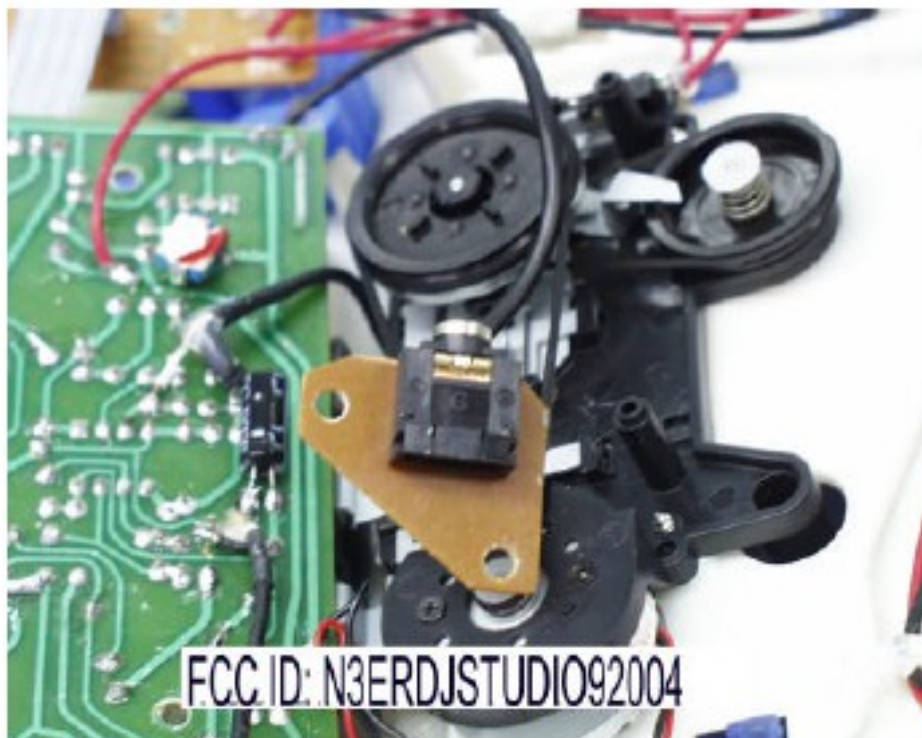
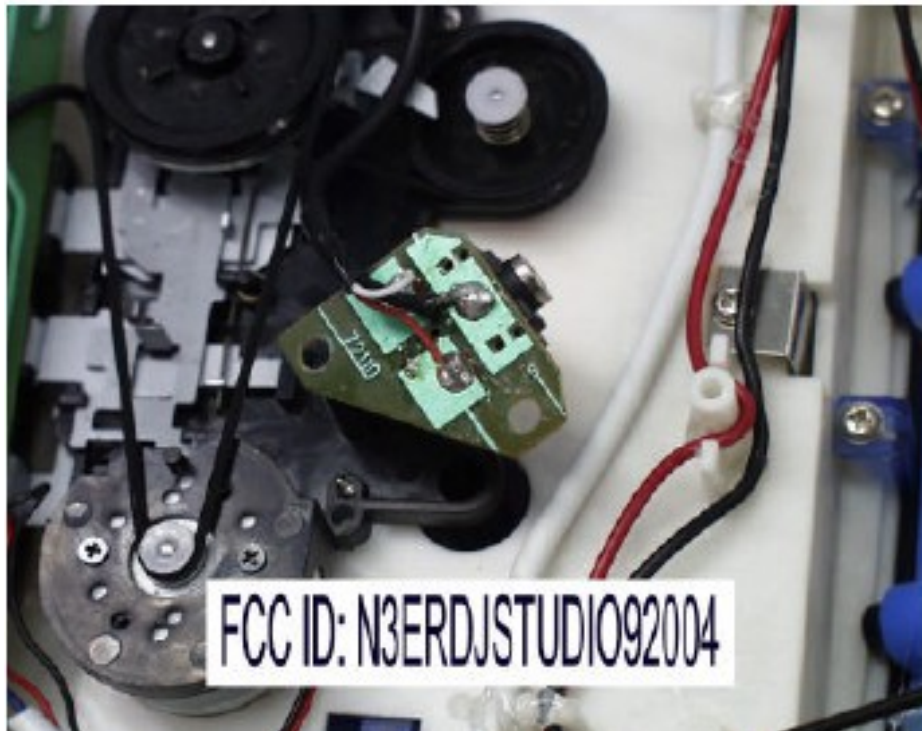


FCC ID: N3ERDJSTUDIO92004

VIEW, VOLUME CONTROL PCB



VIEW, CASSETTE DRIVE



VIEW, BACK ON AIR LIGHT PCB



VIEW, INSIDE CONTROL SECTION



VIEW, FCC TEST SETUP FRONT & BACK



Printer friendly version

TCB

GRANT OF EQUIPMENT AUTHORIZATION

TCB

Certification

Issued Under the Authority of the Federal Communications Commission

By:

Intertek Testing Services NA, Inc. 70 Codman Hill Road Boxborough, MA 01719

Date of Grant: 05/24/2002

Application Dated: 05/24/2002

Wild Planet Entertainment, Inc. 225 Bush Street Suite 1300 San Francisco, CA 94104

Attention: Shannon Bruzelius, Product Integrity Manager

NOT TRANSFERABLE

EQUIPMENT AUTHORIZATION is hereby issued to the named GRANTEE, and is VALID ONLY for the equipment identified hereon for use under the Commission's Rules and Regulations listed below.

FCC IDENTIFIER:	N3ERDSTUDIO92004		
Name of Grantee:	Wild Planet Entertainment, Inc.		
Equipment Class:	Part 15 Low Power Transmitter Below 1705 kHz		
Notes:	RADIO DJ Real DJ broadcast Studio		
FCC Rule Parts	Frequency Range (MHZ)	Output Watts	Frequency Tolerance
15C	1.61 - 1.61		Emission Designator

Grant Notes